



Supporting the Code for sustainable homes. Energy efficiency, waste recycling, ecology, health and well being.

The UK's Number 1 Supplier for Recycling Bins, Clothes Airers & ECO Dryers, Cleaning Products, Replacement Ironing Board Covers, Ironing Boards, Kitchen Bins, Fireproof bins, Industrial bins and Cigarette Bins.

[www.LaundryCompany.co.uk](http://www.LaundryCompany.co.uk)

**Laundry Company Limited**  
Unit 9 Cheatles Bridge  
Bodmoor Heath  
North Warwickshire, B76 9JD

**Telephone: 01827 874 100**

**Fax: 01827 874 200**

**Email: [sales@laundrycompany.co.uk](mailto:sales@laundrycompany.co.uk)**

## Laundry Company Limited - Product Information Guide – Vileda Cordomatic DUO 30M Clothes Line



### Main Benefits of the Vileda Cordomatic DUO 30M Clothes Line;

- ▶ 2 x 15 metre lines.
- ▶ Designed for permanent outdoor fitting.
- ▶ Complete with instructions and brackets.
- ▶ Robust.
- ▶ Long Lasting.

**Stock Availability: In Stock - Next Working Day | Manufacturers Warranty: 2 Years**

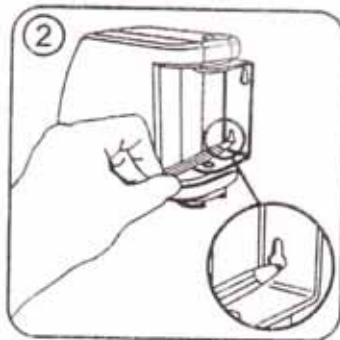
**Order Part Number: VL-127066-AS**

**Brian Trappett**  
UK Marketing Manager  
[brian@laundrycompany.co.uk](mailto:brian@laundrycompany.co.uk)

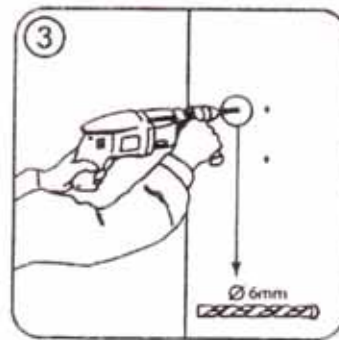
# Dual Cordomatic Installation & Operating Instructions



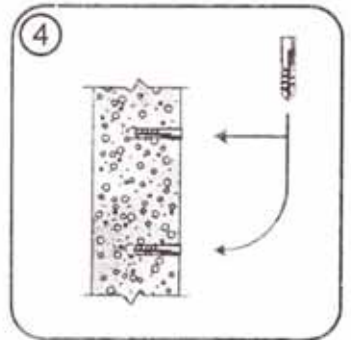
1 Select Wall Positions.  
(Approx 1.8m above the ground level)



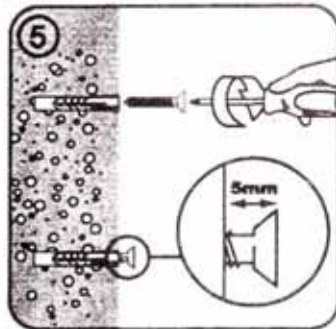
2 Mark hole positions through security bracket.



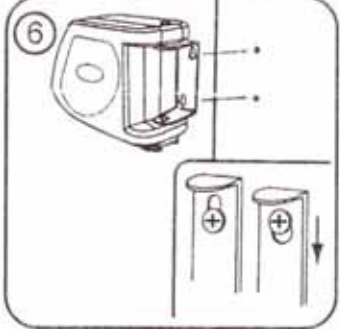
3 Remove the product and drill hole positions.



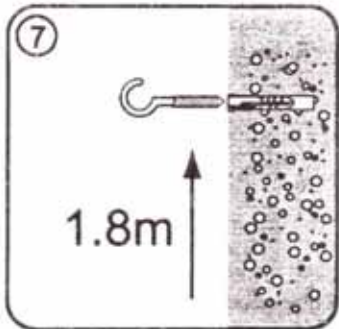
4 Insert wall plugs provided.



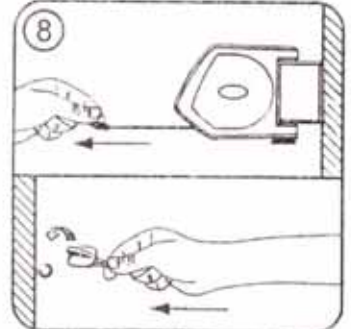
5 Use the screws provided leaving 5mm protruding from the wall.



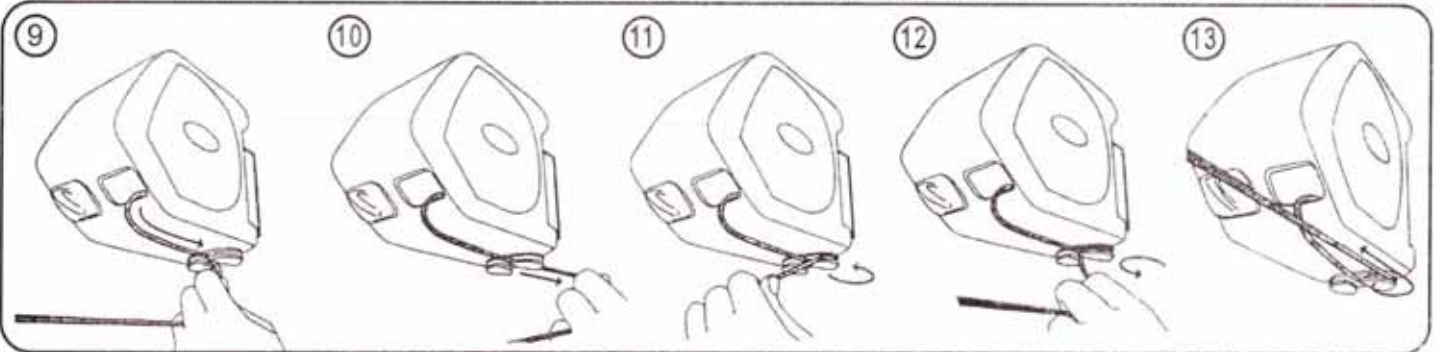
6 Place the product over the screws and locate in the locked position.



7 On the opposite wall, mark, drill and screw in the hook provided.



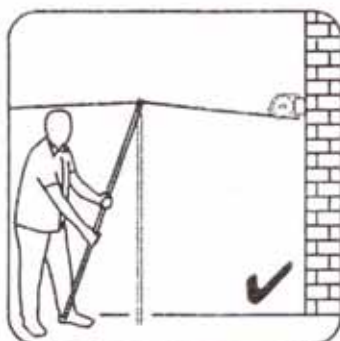
8 Extend the lines across to the hook with the lines straight and level.



9 Pull the lines taut from the reel end, Loop the lines TWICE around the locking cleat at the bottom of the reel.

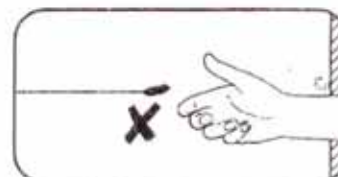
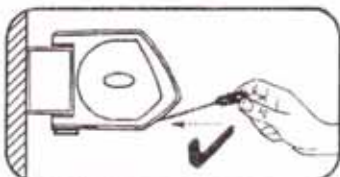


Use a line prop for heavy loads  
(Line prop not included)

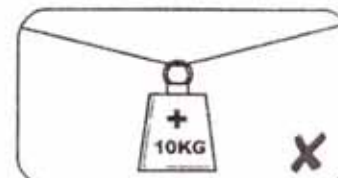
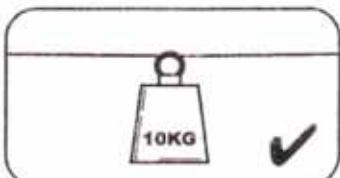


Do NOT use in high winds

Lines must be guided back safely



Do NOT let lines retract independently



Do NOT load more than 10kg per line

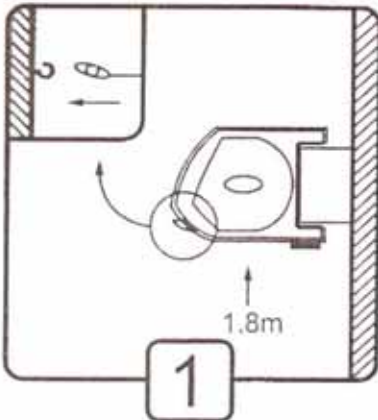
## DUAL CORDOMATIC INSTALLATION & OPERATING INSTRUCTIONS



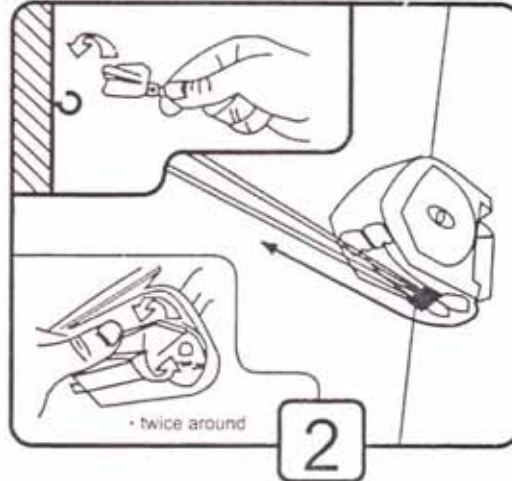
### Installation

1. Select wall position. (Approx 1.8m above ground level).
2. Mark hole positions through securing bracket.
3. Remove the product and drill hole positions.
4. Insert wall plugs provided.
5. Screw Dual Cordomatic to wall.
6. Extend the lines from the dryer to the fixing locations ensuring the lines are straight and level.
7. Mark hole positions for retention hooks.
8. Drill holes at marked positions.
9. Screw retention hooks into position.

**WARNING: DO NOT USE in heavy winds otherwise damage to plastic or metal components may occur**



Extend the lines from the dryer to the fixing locations. Hook ends securely over retention hooks.



Once the free ends are fastened over the retention hooks, pull the lines taut from the reel end. Loop lines **twice** around the locking cleat at the bottom of the reel.



**Note: It is important that the lines are guided back and not allowed to recoil independently.**

**UK** For further information please contact:

Laundry Company Limited  
telephone: 01827 874 100  
fax: 01827 874 200  
email: [sales@laundrycompany.co.uk](mailto:sales@laundrycompany.co.uk)

